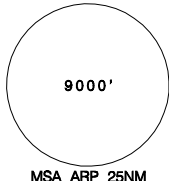


臺灣桃園國際機場
TAIPEI/TAIWAN TAOYUAN INTL AD

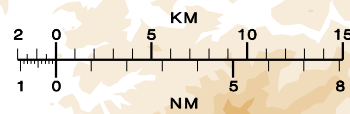
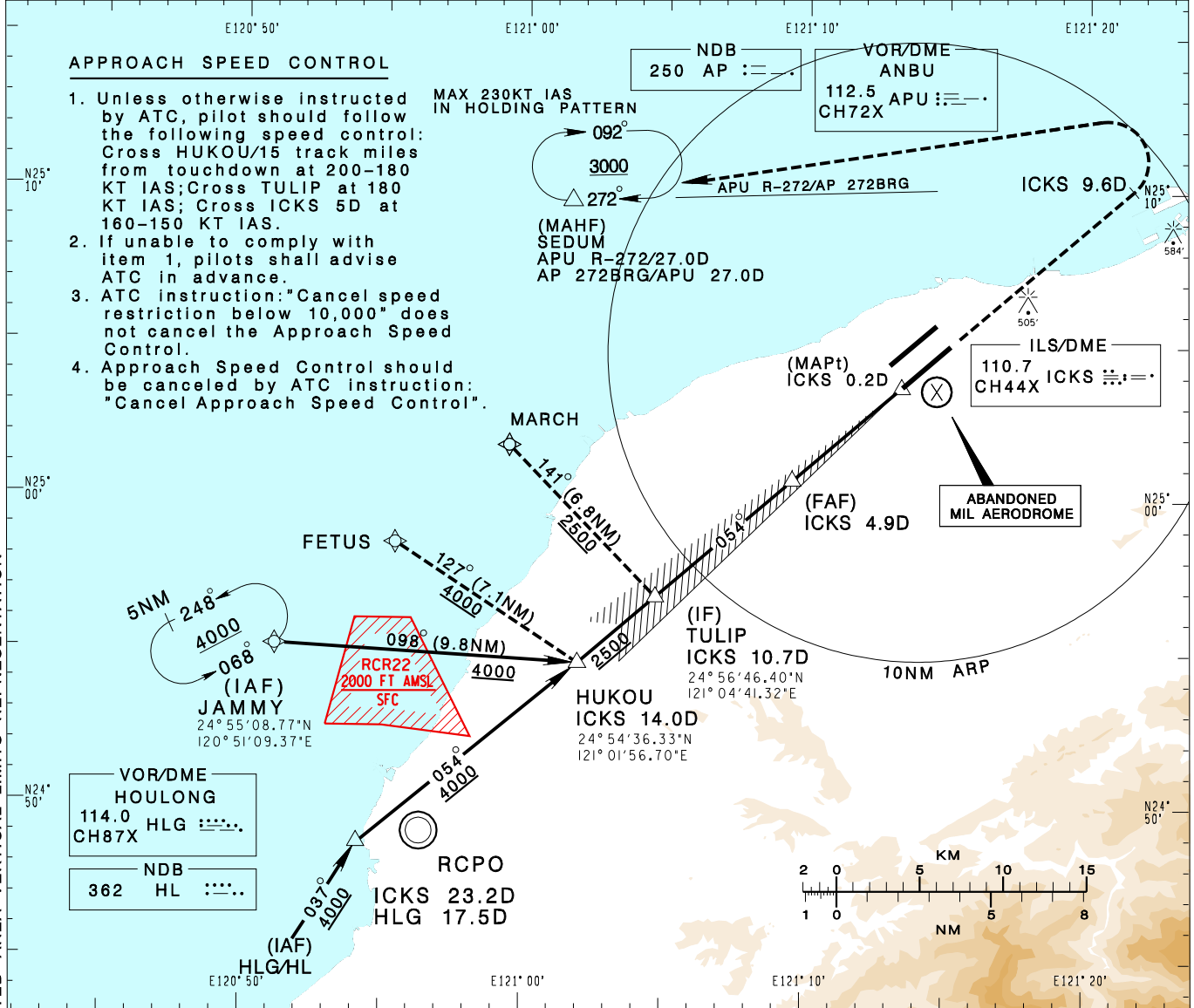
RCTP
LOC RWY05R

TAIPEI APP 125.1 128.5 125.6	TAIPEI TWR 118.7 129.3	ATIS 127.6	VAR 5° W 	
Apt Elev: 108'	Rwy05R DTHR Elev: 107'	Trans Level: FL130		Trans Alt: 11,000'
BEARINGS ARE MAGNETIC; DISTANCES ARE NAUTICAL MILES; ELEVATIONS, HEIGHTS IN FEET				

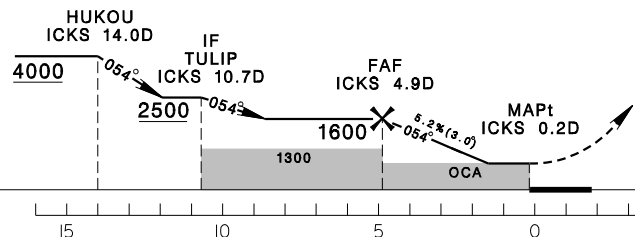
APPROACH SPEED CONTROL

- Unless otherwise instructed by ATC, pilot should follow the following speed control: Cross HUKOU/15 track miles from touchdown at 200-180 KT IAS; Cross TULIP at 180 KT IAS; Cross ICKS 5D at 160-150 KT IAS.
- If unable to comply with item 1, pilots shall advise ATC in advance.
- ATC instruction: "Cancel speed restriction below 10,000" does not cancel the Approach Speed Control.
- Approach Speed Control should be canceled by ATC instruction: "Cancel Approach Speed Control".

MAX 230KT IAS IN HOLDING PATTERN



4DME 1380	3DME 1060	2DME 740	DIST to ICKS ADVISORY ALT
--------------	--------------	-------------	------------------------------



MINIMA (OCA IN FT, VIS IN M, OCH IN FT)

CATEGORY	A	B	C	D
STRAIGHT IN	630/1200 522	630/1600 522	630/1700 522	630/1700 522
STRAIGHT IN (ALS OUT)	630/1600 522	630/1600 522	630/2400 522	630/2400 522
CIRCLING	880/1900 772	930/2800 822	1030/4400 922	1030/4800 922

NOTE
1. CIRCLING NOT AUTHORIZED SOUTHEAST OF RWY 05R/23L.
2. ATS SURVEILLANCE REQUIRED FOR JAMMY TO HUKOU AND MISSED APCH SEGMENTS.
*DME REQUIRED.

CHANGES: NEW PAGE NUMBER, UPDATE RESTRICTED AREA VERTICAL LIMITS REPRESENTATION